


Scepter II

Product Type	Broadloom	
Style Number	50521	
Construction	Solid Cut	
Fiber	Nylon	
Dye Method	100% Piece Dyed	
Primary Backing	Polypropylene	
Secondary Backing	Classicbac®	
Protective Treatments	SSP® Shaw Soil Protection	
Recommended Adhesive	H1000, H1200 or H3800	
	u.s.	metric
Product Size	12 ft	3.66 m
Gauge	1/10 in	39.4 per 10 cm
Stitches	11.5 per in	46.0 per 10 cm
Average Density	6222 oz/yd³	0.23 g/cm³
Kilotex		10.97
Total Thickness	0.401 in	10.19 mm
Tufted Weight	42 oz/yd²	1424 g/m²
Installation Pattern Repeat	None	



Recommended Installation Method

Direct Glue, Double Glue, Stretch-In

Performance + Testing

Pill Test	Pass
Radiant Panel	Class I
NBS Smoke	Less Than 450
Electrostatic Propensity	Less Than 3.5 kv
CRI Green Label Plus (GLP)	GLP8878
ADA Compliance	>0.6, meets the recommended static coefficient of friction for ADA walking surfaces and accessible routes***

Test Reports may be included or listed by the manufacturing/inventory style number as opposed to the noted selling style number.

Warranties

10 Year Commercial Limited Warranty

Diversity, Equity & Inclusion

We believe all humans are equal. Individually and collectively, we need to proactively create and promote opportunities that give everybody an equal footing in life. We nurture an environment where every voice and perspective can be heard, and proactively promote accessibility and inclusivity inside our network and beyond. One proof point is our ability to meet the criteria of the Social Fairness pillar of the Cradle to Cradle Product Standard. At Shaw Industries, we promote supplier participation that is reflective of Shaw’s diverse customer base and local community. More than 42% of our spend\*\*\*\*\* is with small and diverse businesses. We believe having a strong Supplier Diversity Program is strategic for bringing more innovation to our businesses and openingnew markets for growth.

Material Health & Environmental Certifications

Health & Wellbeing	
Material Ingredient Transparency	Cradle to Cradle Certified®   Silver Level (Version 3.1) NSF 140   Gold
Indoor Air Quality	CRI Green Label Plus (GLP)   GLP8878
Climate Impact	
Environmental Product Declaration (EPD)	3rd Party Certified in Accordance with ISO14044, ISO14025 & EN15804
Total Recycled Content	<1% (Pre-Consumer <1%   Post-Consumer 0%)
Product Packaging	100% Recyclable
Global Product Assessment	GSA   Approved CE Marking (EN 14041)   3rd Party Certified Environmental Guarantee*   Re[turn] Reclamation Program*   Pickup & Delivery Available Country of Origin**   USA

WELL V2 Contribution Credit

X08 Hazardous Material Reduction Part 1: Limit Hazardous Materials Optimization	C2C Silver Level (Version 3.1)
X10 Volatile Compound Reduction Part 1 (A): Manage Volatile Organic Compounds (VOCs) Optimization	C2C Silver Level (Version 3.1)
X11 Long Term Emissions Control Part 2: Flooring Optimization	Green Label Plus Certificationglp8878
X13 Enhanced Material Precaution Part 1: Select Optimized Materials Optimization	C2C Silver Level (Version 3.1)
X14 Material Transparency Part 1: Promote Ingredient Disclosure Optimization	C2C Silver Level (Version 3.1)

Leed v4 Contribution Credits

MR Credit: Building Product Disclosure and Optimization Environmental Product Declarations - Option 1: Environmental Product Declaration (EPD)	3rd Party Certified in Accordance with ISO14044, ISO14025 & EN15804
MR Credit: Building Product Disclosure and Optimization Material Ingredients - Option 1: Material Ingredient Reporting	C2C Silver Level (Version 3.1)
MR Credit: Building Product Disclosure and Optimization Material Ingredients - Option 2: Material Ingredient Optimization	C2C Silver Level (Version 3.1)
EQ Credit: Low Emitting Materials Option 1: Product Category Calculations	Green Label Plus Certification: GLP8878

Available Colorways

 <div>Ivory 43101 LRV 41.6</div>	 <div>Canvas 43106 LRV 31.9</div>	 <div>Hazelnut 43111 LRV 22.1</div>	 <div>Buttercream 43115 LRV 30.4</div>	 <div>Water Chestnut 43120 LRV 21.6</div>	 <div>Sorbet 43135 LRV 21.1</div>
 <div>Mushroom 43150 LRV 21.9</div>	 <div>Pebble Beach 43155 LRV 16</div>	 <div>Puma 43193 LRV 12.2</div>	 <div>Lemon 43201 LRV 31.9</div>	 <div>Sunshine 43202 LRV 23.9</div>	 <div>Gold Run 43220 LRV 13.8</div>
 <div>Wheat Field 43230 LRV 17.2</div>	 <div>Midas 43235 LRV 22.1</div>	 <div>Lime 43301 LRV 20.6</div>	 <div>Retro 43302 LRV 16.1</div>	 <div>Seacrest 43306 LRV 14.7</div>	 <div>Denver Pine 43308 LRV 7.7</div>
 <div>Elephant 43309 LRV 5.4</div>	 <div>Grenada 43314 LRV 5.6</div>	 <div>Tundra 43315 LRV 8.8</div>	 <div>Boxwood 43316 LRV 1.9</div>	 <div>Basil 43319 LRV 3.5</div>	 <div>Longhorn 43321 LRV 4</div>
 <div>Sprout 43326 LRV 18.5</div>	 <div>Cactus 43330 LRV 7.5</div>	 <div>Mikado 43331 LRV 15</div>	 <div>Sagebrush 43332 LRV 10.5</div>	 <div>Shade 43340 LRV 7.5</div>	 <div>Fern 43365 LRV 4.6</div>



Avocado 43370  
LRV 3



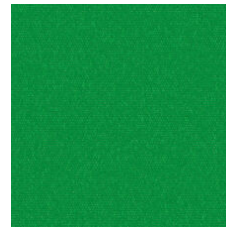
Moss 43371  
LRV 14.8



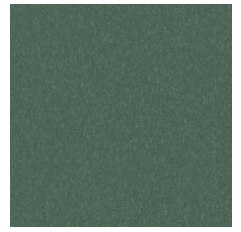
Junglewood 43372  
LRV 7.1



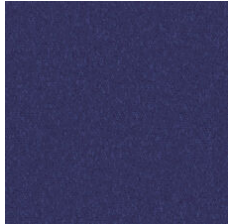
Black Forest 43375  
LRV 3



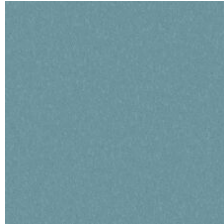
Grass 43399  
LRV 7.9



Delft 43401  
LRV 9.2



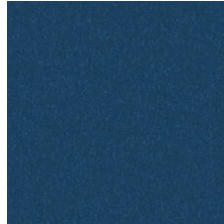
Nautical 43409  
LRV 3.7



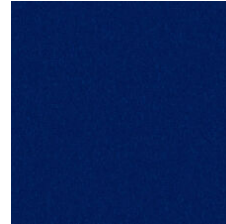
Stonewashed 43416  
LRV 21.2



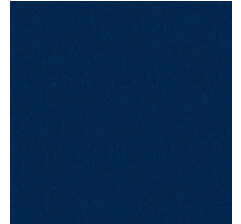
Blue Pearl 43425  
LRV 10.6



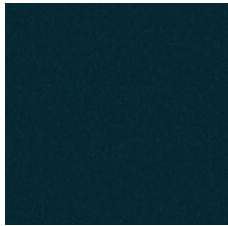
Gulf Stream 43445  
LRV 8.2



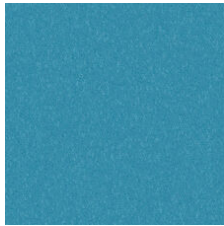
Tonic 43462  
LRV 3.7



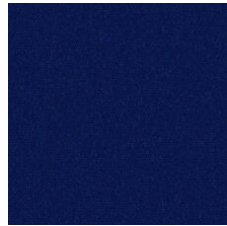
Cobalt 43470  
LRV 4.9



Indigo 43480  
LRV 2.6



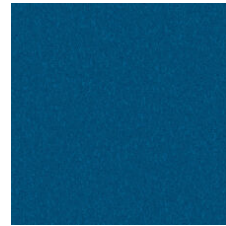
Sea 43484  
LRV 11.8



Royal 43485  
LRV 1.6



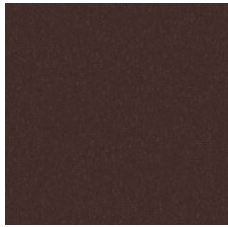
Blue Blazer 43490  
LRV 2.9



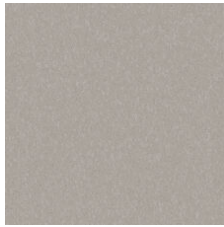
Vivid 43491  
LRV 6.7



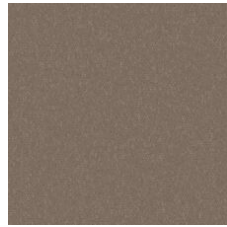
Night Tide 43496  
LRV 1.5



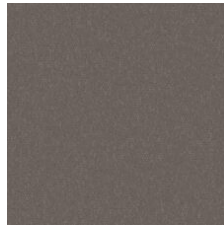
Coal 43500  
LRV 2



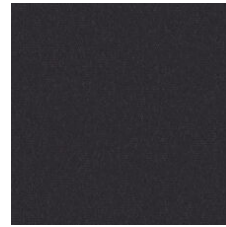
Moonlight 43501  
LRV 29



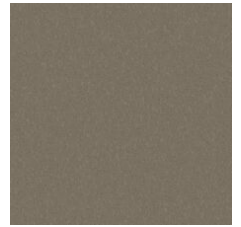
Silver Lining 43502  
LRV 17.3



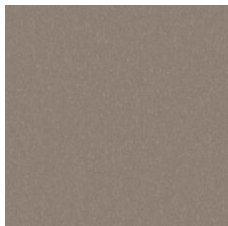
Nimbus 43504  
LRV 15.2



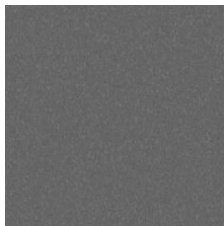
Raven 43505  
LRV 1.1



Dover 43506  
LRV 15.7



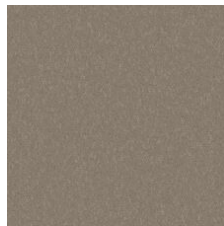
Blizzard 43518  
LRV 27.6



Cloud 43530  
LRV 11.7



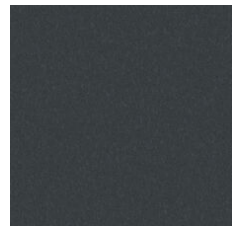
Khaki 43545  
LRV 12.5



Cannon 43555  
LRV 10.9



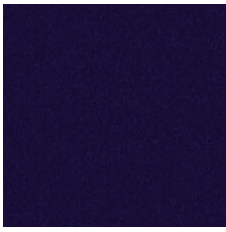
Winter Cloud 43575  
LRV 9.6



Denim 43580  
LRV 5.9



					
Gunmetal 43585 LRV 6.9	Charcoal 43597 LRV 4.6	Orange 43601 LRV 16.5	Fall 43606 LRV 8.3	Spice 43665 LRV 4.8	Antelope 43706 LRV 7
					
Antique Bronze 43707 LRV 6.1	Mahogany 43708 LRV 9.7	Everglade 43709 LRV 2.2	Chocolate 43711 LRV 2.2	Cattail 43713 LRV 5.3	Coffee 43750 LRV 2.8
					
Sesame 43755 LRV 13.4	Suede 43760 LRV 6.7	Twine 43761 LRV 4.3	Hot Pink 43801 LRV 8.6	Henna 43855 LRV 1.9	Cranberry 43860 LRV 2.4
					
Red Soul 43861 LRV 6	Lipstick 43870 LRV 3.1	Emperor 43901 LRV 2.4	Bright 43903 LRV 2.9	Haze 43904 LRV 8.1	Garnet 43906 LRV 3.6
					
Old Spar 43910 LRV 9.3	Fresno 43920 LRV 9.9	Aurora 43944 LRV 6.7	Muscadine 43979 LRV 2.9	Fresh Lilac 43981 LRV 20	Eggplant 43990 LRV 1.9



Violet 43993  
LRV 3

## Additional Information

\* To learn more about the recyclability of our products and our Environmental Guarantee, please visit [shawcontract.com/sustainability](https://shawcontract.com/sustainability).

\*\*Meets or exceeds all local and national regulations in country of manufacture. (Manufactured in an ISO 9001 & ISO 14001 certified facility or equivalent)

\*\*\*This carpet is manufactured to be ADA compliant, but to be fully ADA compliant, the end-user must ensure the carpet is adhered to the floor and installed as outlined in the ADA standards.

[Installation Guidelines](#)

[Maintenance Guidelines](#)

Specifications are subject to nominal manufacturing variance. Material supply and/or manufacturing processes may necessitate changes without notice.

This product is an exclusive design and may not be duplicated in any manner. Use of this design in the creation of another product design is also strictly prohibited.

Visit [shawcontract.com/testing](https://shawcontract.com/testing) for more information.



**PVC-Free**

Corporate Headquarters +1 800 257 7429 | +1 706 532 7984 | **Atlanta** +1 404 853 7429 | **Bengaluru** +91 80 6773 0202 | **Beijing** +86 10 6568 588 | **Chicago** +1 312 467 1331 | **Dubai** +971 4 584 6956 | **Hong Kong** +852 2623 0371 | **Latin America (Miami)** +1 305 827 5912 | **London** +44 207 961 4120 | **Los Angeles** +1 800 233 1614 | **Melbourne** +61 3 9939 8543 | **Mexico City** +55 5010 7600 | **Mumbai** +91 22 6284 5050 | **Nantong** +86 400 800 7429 | **New York** +1 212 953 7429 | **Paris** +33 (0) 1 81 22 44 39 | **San Francisco** +1 415 955 1920 | **Santiago** +562 2431 5000 x 550 | **São Paulo** +55 11 3071 1702 | **Shanghai** +86 21 3338 4000 | **Singapore** +65 6733 1811 | **Sydney** +1 800 556 302